

#### Quality Product

All Manufactured modules are tested 100% by EL (Electroluminescence) during the Production Process & Free from micro cracks.

Our high-performance modules are highly efficient, reliable and provide optimal output.

The company manufactures solar modules in compliance with global standard including IEC 61215, 61730-1, 61730-2, 61701, UL 1703, UL 61730.

#### High Efficiency

High Module efficiency is obtaining top performance even in diffused light conditions.

We are leaders in providing our customers with maximum sunlight conversion.

#### Application Possibilities

Residential and Commercial rooftops, Car ports, Solar Farming, Balconies, Awnings, Street lights, Fences, and Canopies.

#### Our Team

We have a team of qualified experts and engineers making sure that modules produce maximum power. We pride ourselves in caring for each individual customer needs with detailed attention. Our end goal is to give a highly efficient product with exceptional customer service.

#### Guarantee

Our product is durable and has 25 years performance warranty. Integrated manufacturing of cells & modules in production line guarantees optimum performance.



**Electric Performance Parameter**

Model	SS-M-390	SS-M-395	SS-M-400
Nominal Maximum Power (Pmax/W)	390	395	400
Optimum Operating Voltage (Vmp/V)	30.22	30.32	30.68
Optimum Operating Current (Imp/A)	12.91	13.03	13.05
Open Circuit Voltage (Voc/V)	36.81	36.9	37.1
Short Circuit Current (Isc/A)	13.62	13.71	13.73
Module Efficiency	20.19%	20.45%	20.71%

\* Measurement Power Tolerance on Power 0 / +%

\* Under Standard Test Conditions (STC) of irradiance of 1000W/m<sup>2</sup>

\* Maximum System Voltage: 1500V IEC/UL

\* Normal Operating cell Temperature (NOCT) of irradiance of 800W/m<sup>2</sup>, 43± 2° C

\* Spectrum AM 1.5 and cell temperature of 25 °C

\* Wind Load 3600pa , 113 PSF, 210 MPH rated Load & Mechanical Load 5400 pa

**Mechanical Parameter**

Module Dimensions	1712 X 1134 X 35 mm / 67.40 X 44.65 X 1.38 inch
Weight	24 kgs / 52.91 lbs
Cell Size (Monocrystalline)	182x91 mm / 7.16x3.58 in
No Of Cell	108 (6 X 18)
Junction Box	IP68, 3 Bypass diodes
Solar Cable Length(4mm <sup>2</sup> )	1200mm (47.24inch) length with 4mm <sup>2</sup>
Connectors	MC4 compatible
Glass (Tempered & Low Iron)	3.2mm (0.125in) ARC
Encapsulate	EVA
Back Cover (Black Color)	Composite Sheet
Frame (Black Color)	Anodized Aluminum Alloy
Fuse Rating	25

**Temperature Coefficient**

Coefficient of Current	+0.05% /°C
Coefficient of Voltage	-0.29% /°C
Coefficient of Power	-0.37% /°C

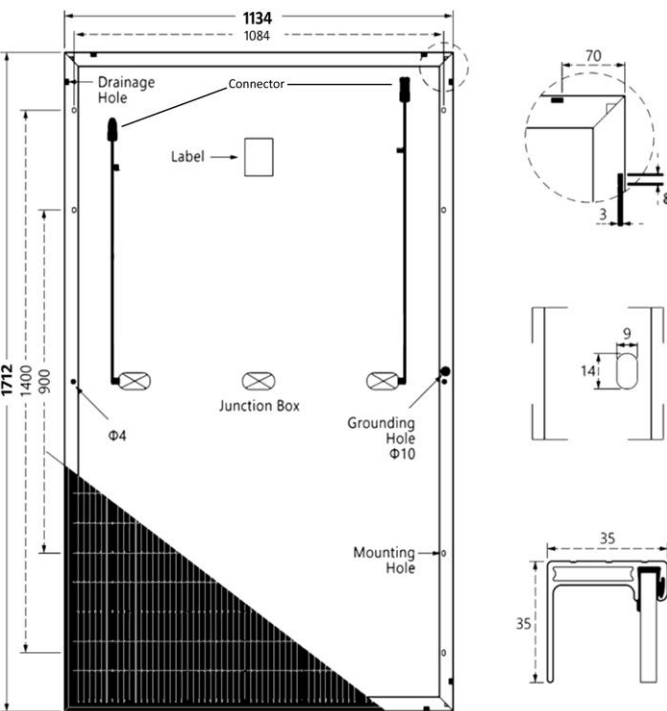
**Tested Operating Conditions**

Temperature Cycling Range	-40°C to 85°C
Humidity Freeze, Damp Heat	85% RH

**Product Warranty**

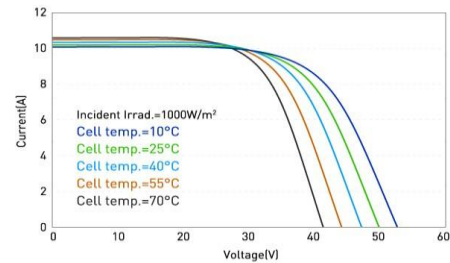
Product Warranty	25 Years
Linear Performance Warranty	90% for the next 10 years and 80% at 25 Year

**Module Drawing**



**IV Curve**

**I-V Curve at Different Temperature**



**I-V/P-V Curve at Different Irradiation**

