
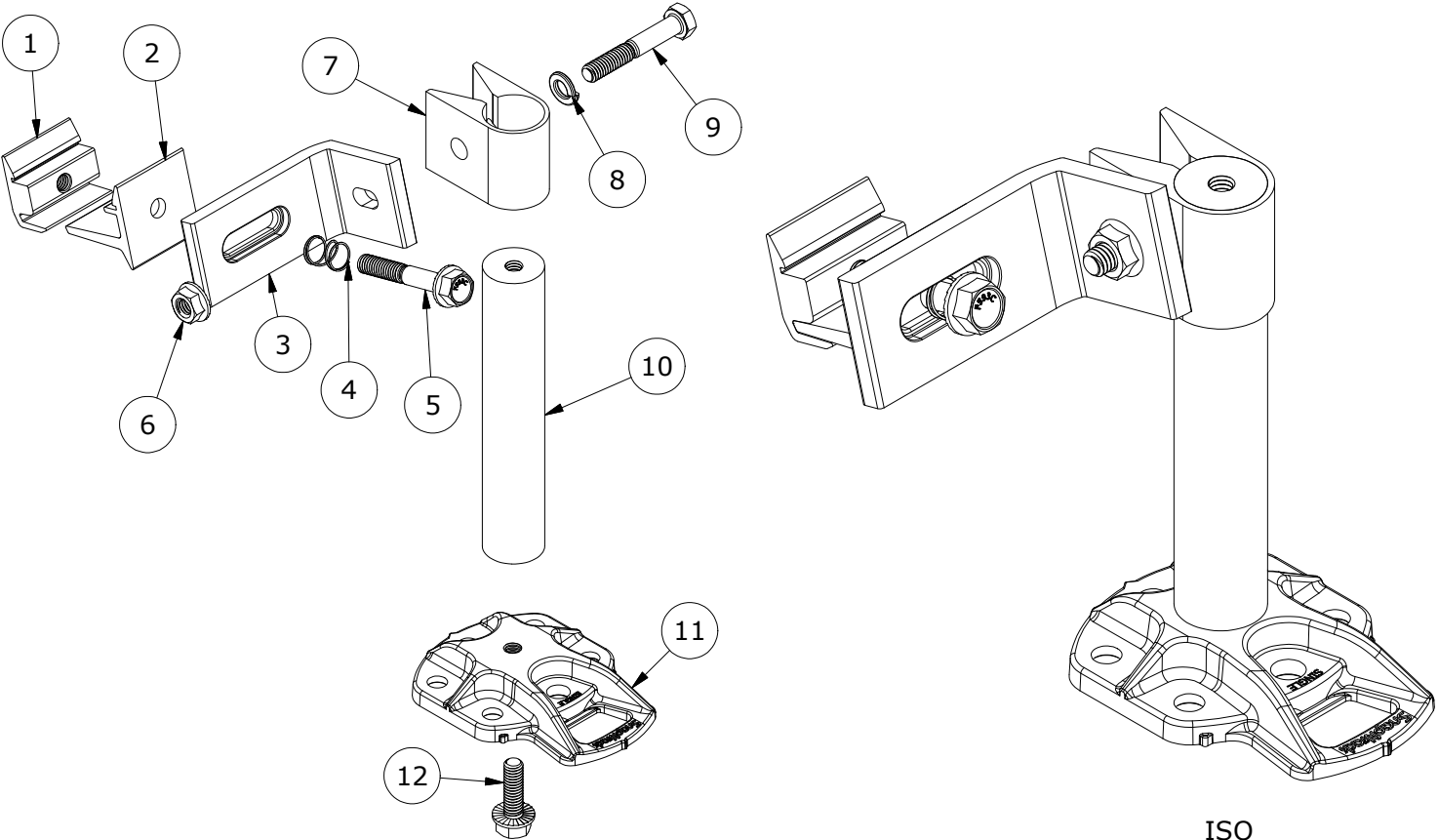


DESCRIPTION:	DRAWN BY:	
SNAPNRACK, ULTRA RAIL TILT-MOUNT KIT	M.Affentranger	
PART NUMBER(S):	REVISION:	
242-10019, 242-10020, 242-10021, 242-10022	A	<small>THE INFORMATION IN THIS DRAWING IS CONFIDENTIAL AND PROPRIETARY. ANY REPRODUCTION, DISCLOSURE, OR USE THEREOF IS PROHIBITED WITHOUT THE WRITTEN CONSENT OF SUNRUN SOUTH LLC.</small>




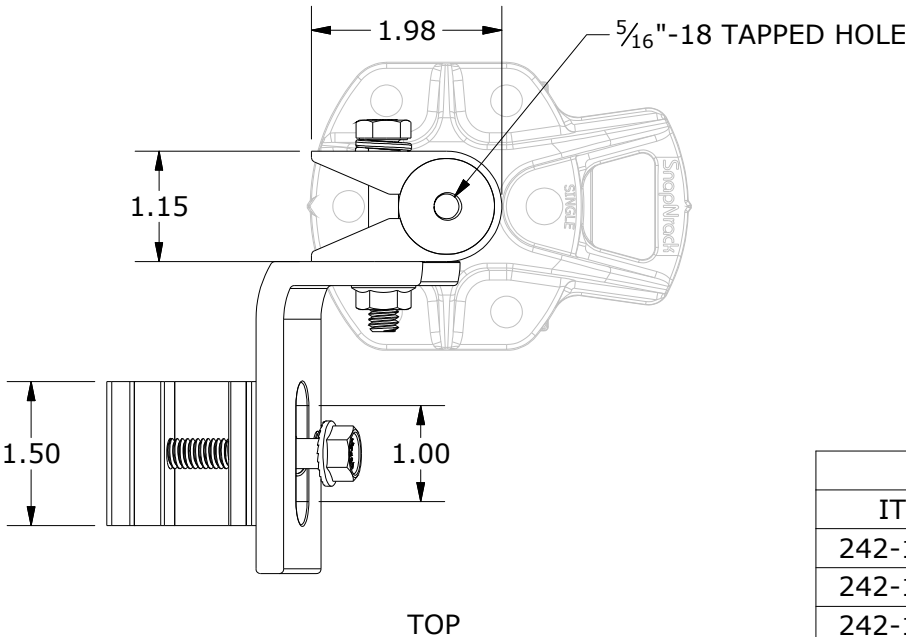
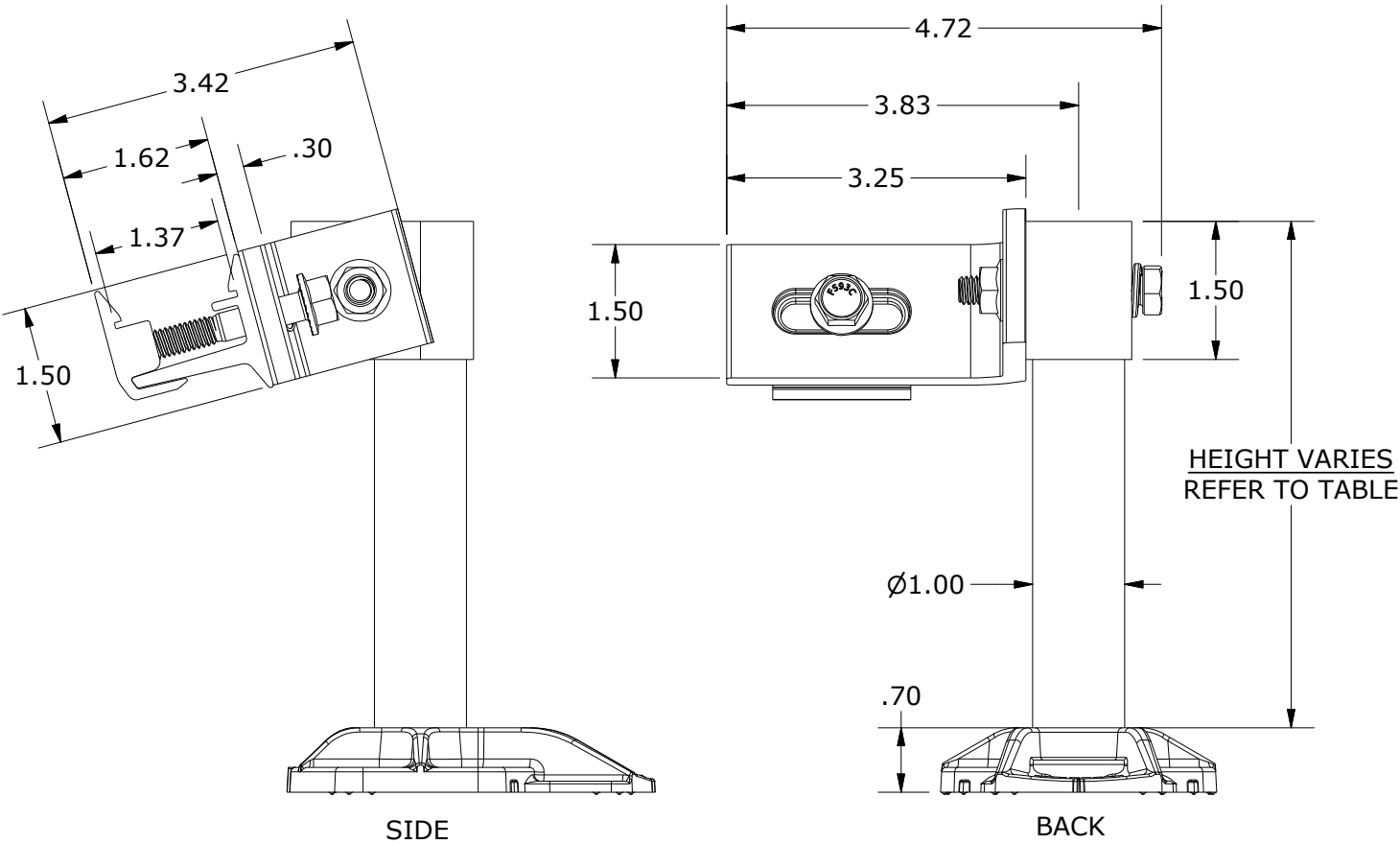
EXPLODED

ISO

PARTS LIST		
ITEM	QTY	DESCRIPTION
1	1	SNAPNRACK, ULTRA RAIL MOUNT TAPPED PRC, CLEAR
2	1	SNAPNRACK, ULTRA RAIL MOUNT THRU PRC, CLEAR
3	1	SNAPNRACK, AP90 L FOOT, STEPPED, CLEAR
4	1	SNAPNRACK, RL UNIVERSAL, MOUNT SPRING, SS
5	1	BOLT, FLANGE, SERRATED, 5-16IN-18 X 2IN, SS
6	1	NUT, FLANGE, SERRATED, 5-16IN-18, SS
7	1	SNAPNRACK STANDOFF CLAMP CLEAR
8	1	WASHER, LOCK, 5-16IN, SPLIT, SS
9	1	5-16IN-18 X 2IN SS HCS BOLT
10	1	SNAPNRACK STANDOFF SHAFT, LENGTH VARIES
11	1	SNAPNRACK, OMNIBASE, CASTING
12	1	BOLT, FLANGE, SERRATED, 5/16IN-18 X 1IN, SS

MATERIALS:	6000 SERIES ALUMINUM, A380 ALUMINUM, 300 SERIES STAINLESS STEEL
DESIGN LOAD (LBS):	655 UP, 1333 DOWN, 190 SIDE, 161 LATERAL
ULTIMATE LOAD (LBS):	N/A
TORQUE SPECIFICATION:	12 LB-FT
CERTIFICATION:	UL 2703, FILE E359313
WEIGHT (LBS):	REFER TO TABLE ON NEXT PAGE

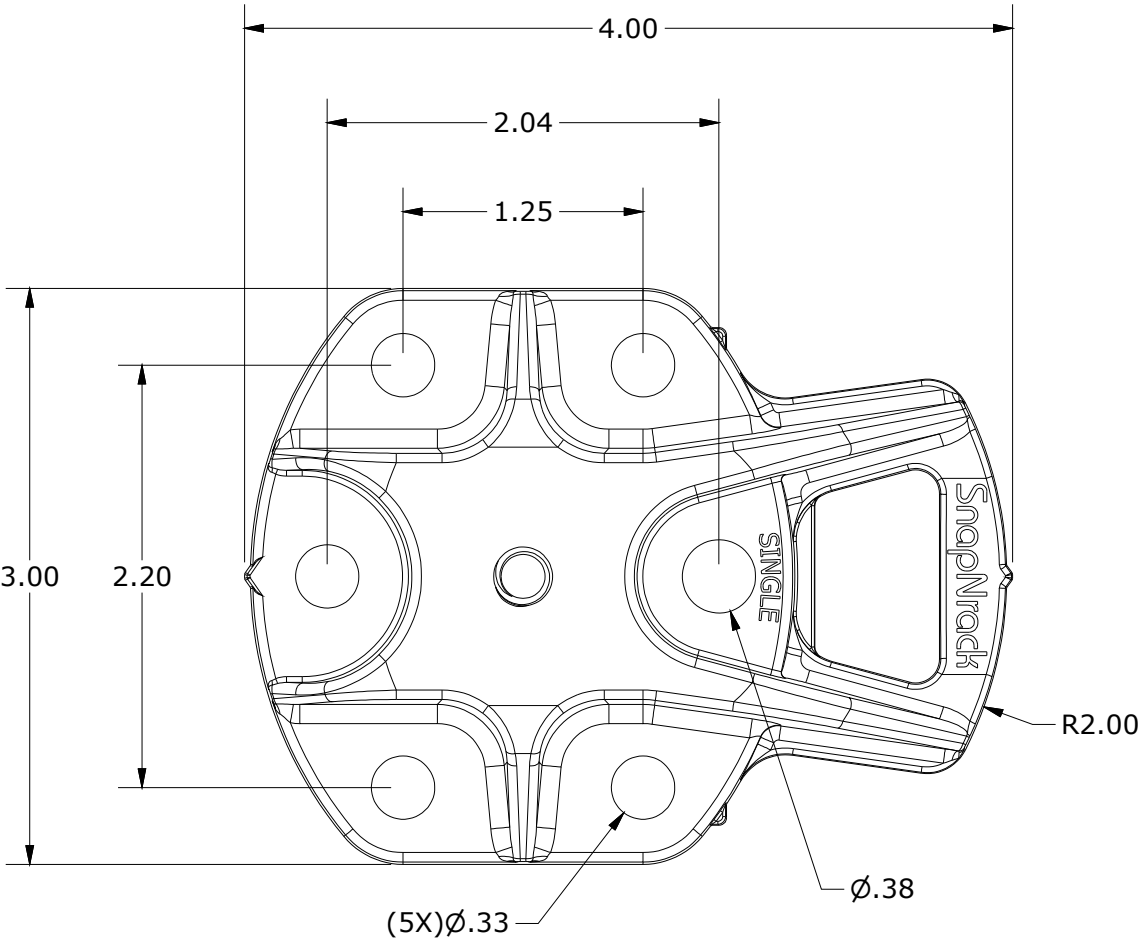
DESCRIPTION:	DRAWN BY:	
SNAPNRACK, ULTRA RAIL TILT-MOUNT KIT	M.Affentranger	
PART NUMBER(S):	REVISION:	<p>THE INFORMATION IN THIS DRAWING IS CONFIDENTIAL AND PROPRIETARY. ANY REPRODUCTION, DISCLOSURE, OR USE THEREOF IS PROHIBITED WITHOUT THE WRITTEN CONSENT OF SUNRUN SOUTH LLC.</p>
242-10019, 242-10020, 242-10021, 242-10022	A	



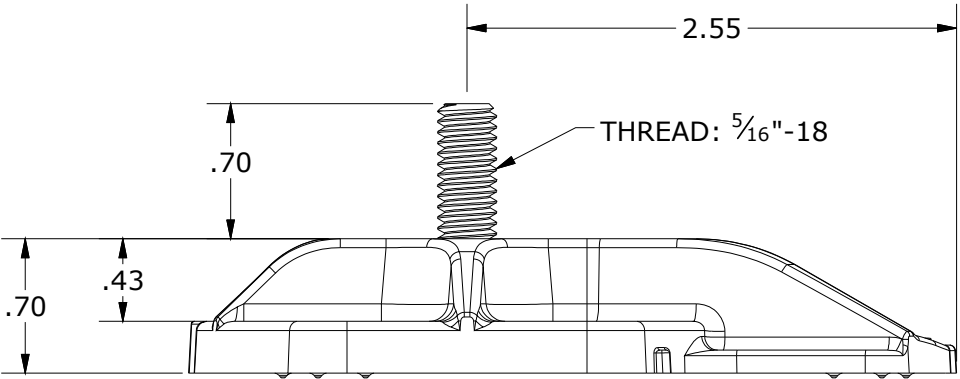
ALL DIMENSIONS IN INCHES

TABLE OF PROPERTIES		
ITEM	STANDOFF LENGTH	WEIGHT (LBS)
242-10019	5-1/2"	1.23
242-10020	10"	1.55
242-10021	14"	1.83
242-10021	23"	2.48

DESCRIPTION: SNAPNRACK, ULTRA RAIL TILT-MOUNT KIT	DRAWN BY: M.Affentranger	SnapNrack® <small>THE INFORMATION IN THIS DRAWING IS CONFIDENTIAL AND PROPRIETARY. ANY REPRODUCTION, DISCLOSURE, OR USE THEREOF IS PROHIBITED WITHOUT THE WRITTEN CONSENT OF SUNRUN SOUTH LLC.</small>
	REVISION: A	
PART NUMBER(S): 242-10019, 242-10020, 242-10021, 242-10022		



TOP



SIDE

ALL DIMENSIONS IN INCHES