

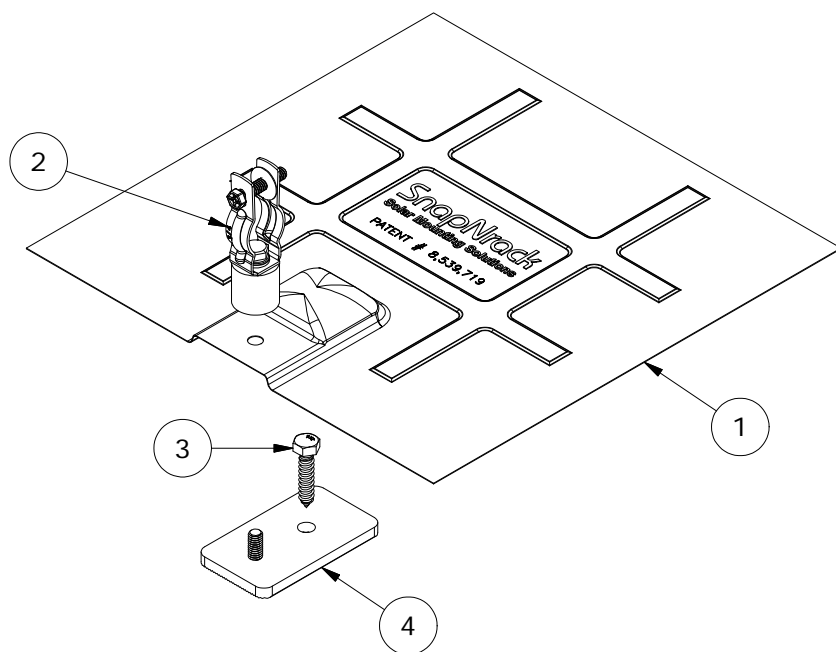
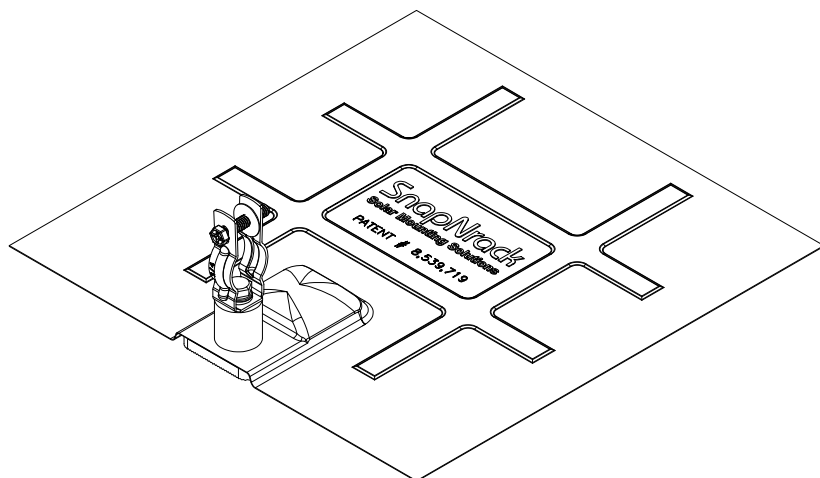
DESCRIPTION:
SNAPNRACK, CONDUIT SUPPORT COMP SHINGLE

DRAWN BY:
 M.Watkins



PART NUMBER(S):
 242-02106

REVISION:
A



| PARTS LIST | | |
|------------|-----|---|
| ITEM | QTY | DESCRIPTION |
| 1 | 1 | SNAPNRACK, L FOOT FLASHING, 12IN X 12IN, BLACK GALV |
| 2 | 1 | SNAPNRACK, CONDUIT SUPPORT STANDOFF SUBASSEMBLY |
| 3 | 1 | SCREW, LAG, 5/16IN X 1-1/2IN, HEX, SS |
| 4 | 1 | SNAPNRACK, L FOOT BASE, MILL |

| | |
|-----------------------|--|
| MATERIALS: | 6000 SERIES ALUMINUM, STAINLESS STEEL, ZINC PLATED STEEL, GALV STEEL |
| DESIGN LOAD (LBS): | N/A |
| ULTIMATE LOAD (LBS): | N/A |
| TORQUE SPECIFICATION: | N/A LB-FT |
| CERTIFICATION: | N/A |
| WEIGHT (LBS): | 1.11 |

DESCRIPTION:

SNAPNRACK, CONDUIT SUPPORT COMP SHINGLE

DRAWN BY:

M.Watkins

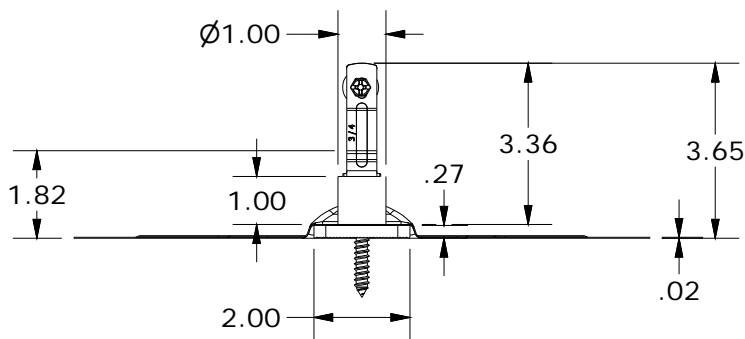
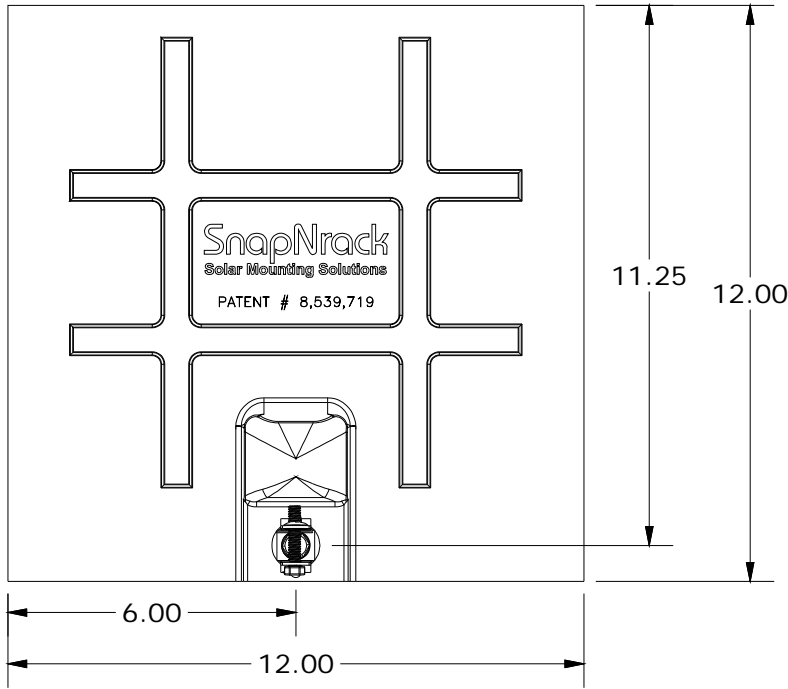
REVISION:

A

SnapNrack™
Solar Mounting Solutions

PART NUMBER(S):

242-02106



ALL DIMENSIONS IN INCHES