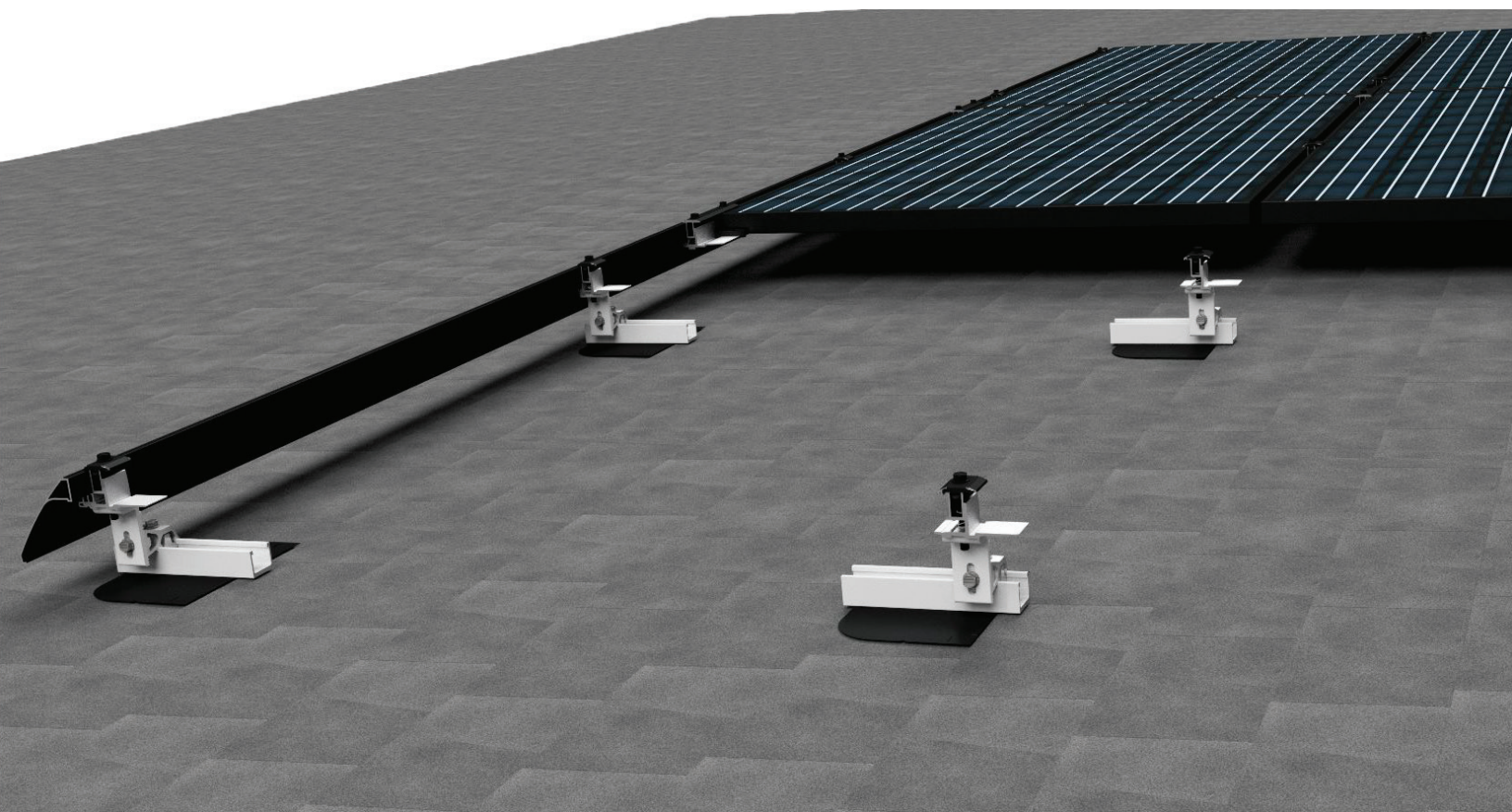


SnapNrack®

RL Universal



Installing Solar Has Never Been This Fast & Easy



System designed with maximum versatility for any arrays including staggered



All parts fit in a box for easy logistics



Drop-in features make the install process intuitive and fast



Simple design allows system to be installed by single installer on the roof



Listed to UL Standard 2703 for Grounding/Bonding and Fire Classification

SnapNrack RL Universal

is designed to provide the fastest, most intuitive install experience for residential roofs. The direct mount system features four basic components for easy material management. Features incredible flexibility with a single Universal mounts that fit module heights from 32 - 40 mm and the highest spans of any current rail less system.

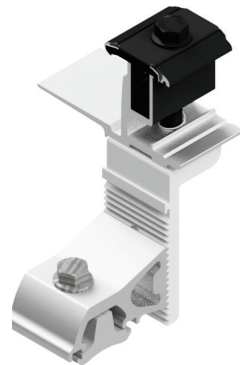


Flash Track with Patented Umbrella Technology

- Single Umbrella lag screw secures flashing and flash track to roof in one complete action
- Umbrella technology provides weatherproofing with a long-lasting mechanical seal
- Flash track is designed for maximum versatility with 6 inches of North-South adjustability for all Mounts

Mounts

- Single mount used at all locations on array
- Extreme time saver by eliminating link interference through the flexibility of the Mount to change orientation
- Features a rock-in channel nut design for easy attachment to Flash Track
- Slotted riser provides leveling for easy height adjustments



Links

- Simple design provides mounting platform between two to four modules
- Clamps onto top of modules securing them in place while providing row-to-row bonding
- Next row of modules easily slides into place as with the Mounts

Skirt

- Easily locks to bottom of module mounts and links for clean aesthetics
- Ensures a strong structure for leveling and alignment of first row of modules
- Skirt length is compatible with both portrait and landscape module orientations



Quality. Innovative. Superior.

SnapNrack Solar Mounting Solutions are engineered to optimize material use and labor resources and improve overall installation quality and safety.