



samlexamerica®

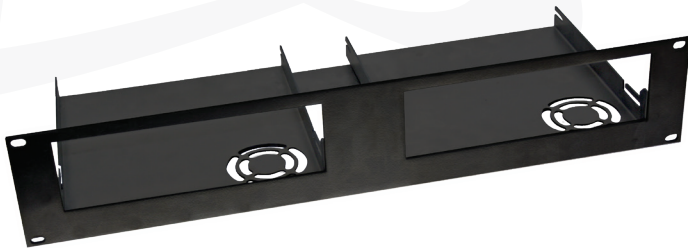
19" 2U

Rack Mount Assembly for SEC Power Supplies

Model
SEC-R1, SEC-R2



SEC-R1



SEC-R2



SEC-R2 with SEC-1223 & SEC-1235M

SEC-R1 and SEC-R2 rack mount assemblies are compatible with all Samlex SEC and SEC-P Series models of switching desktop power supplies ranging from 12 to 35 Amps. Available with one or two trays, these 19", 2U assemblies are easily user configurable.

Fitting a power supply into the rack mount assembly is very simple – just slide into the tray and secure with the screws already included with the power supply.

The dual trays of the SEC-R2 provide side-by-side flexibility. Mount any combination of SEC or SEC-P desktop Power Supplies or install one Power Supply and use the second shelf to store a mobile radio or battery pack.

Design Features

- Ultra Heavy Gauge Steel; will not bend or deform
- Black powder coated finish is scuff resistant
- Precision cut mounting slots for quick, easy and secure mounting
- Vent slots allow unobstructed air flow from Power Supply cooling fans

SEC-R1 & SEC-R2 Rack Mount Assemblies are compatible with the following Power Supply models:

SEC Series

- SEC-1212/SEC-1212CE
- SEC-1223/SEC-1223CE
- SEC-1235/SEC-1235M
- SEC-1223BBM/SEC-1223BBM-230

SEC-P Series

- SEC-1212P
- SEC-1223P
- SEC-1235P
- SEC-1235P-M

2 YEAR WARRANTY

MODEL NO.		SEC-R1	SEC-R2
DIMENSIONS	(W x D x H), CM	48.18 x 18.54 x 8.74	48.18 x 18.54 x 8.74
	(W x D x H), INCHES	18.97 x 7.30 x 3.44	18.97 x 7.30 x 3.44
WEIGHT	KG	1.08	1.45
	LBS	2.4	3.2