

# S-5!<sup>®</sup>

The Right Way!

The right way to attach almost anything to metal roofs!

## Installation Instructions

**S-5!<sup>®</sup> Warning!** Please use these products responsibly! Visit our website or contact your S-5! distributor for available load test results. The user and/or installer of these parts is responsible for all necessary engineering and design to ensure the S-5-K Grip<sup>™</sup> has been properly spaced and configured.

**Notice to S-5! product users:** Due to the many variables involved with specific panel products, climates, snow melt phenomena, and job particulars, the manufacturer cannot and does not express any opinions as to the suitability of any S-5! assembly for any specific application and assumes no liability with respect thereto. S-5! products are tested for ultimate holding strength on various profile types and materials. This document is an installation guide only and the photographs and drawings herein are for the purpose of illustrating installation, tools and techniques, not system designs. Information contained within is intended to apply to the document as a whole.

**The S-5-K Grip<sup>™</sup> clamp is designed to fit Klip Rib<sup>®</sup> and other concealed fix ribbed profiles.**

The S-5-K Grip utilizes multiple inserts (sold separately) in order to accommodate a variety of these profiles. Each insert has a unique shape that allows for a tight fit and provides increased holding strength over other attachment options.

The appropriate seam profiles for each insert option are listed on the back of these installation instructions.

The heads of the clamp's M8-1.25 X 16 mm Length 13 mm Hex Flange Bolts control the amount of compression, which reduces the possibility of over-compressing the seam, and makes installation a snap!

## Tools Needed

- Ratchet or Screw Gun with 13 mm Hex Socket

## To Install S-5-K Grip<sup>™</sup>

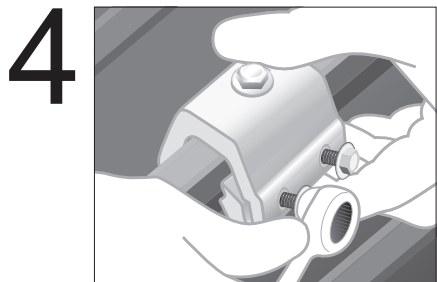
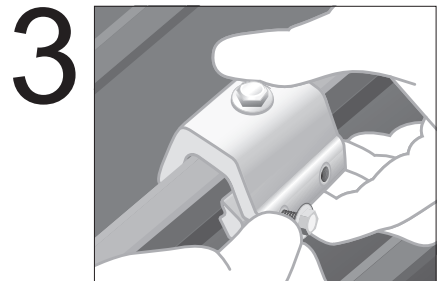
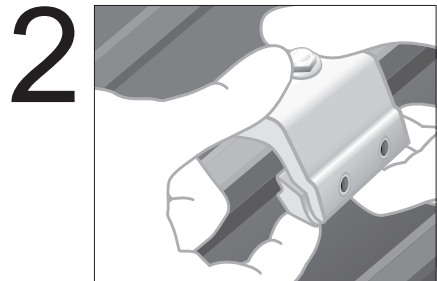
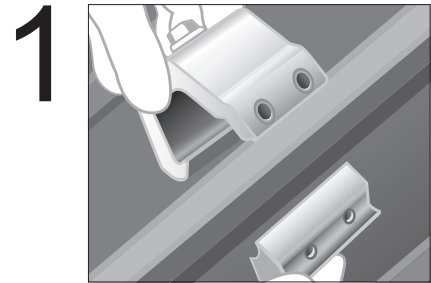
1. First, position clamp insert at desired location along the rib, just under the fold of the rib. When using K-Grip Snow, Position 2" upslope from roof clips. For more information regarding location of roof clips and K-Grip Snow visit [www.S-5.com](http://www.S-5.com)
2. Then, roll the clamp into position over the seam and insert. Position the clamp so that it is centered over the clamp insert. When using K-Grip Snow, ensure bolt holes are oriented in the correct upslope or down slope position depending on application (see ColorGard<sup>®</sup> Install)
3. Partially thread the two flanged bolts into the base of the S-5-K Grip or S-5-K Grip Snow by hand, or the single flanged bolt into the base of the S-5-K Grip Mini. The bolt(s) should engage the divot(s) in the S-5-K Grip insert.
4. Tighten the bolt(s) at the base of the S-5-K Grip using a ratchet or screw gun\* until the head of the bolt(s) rests against the body of the clamp.

**\* For time-saving tool recommendations, call S-5!**

When relying upon published load values, bolt tension should be verified periodically throughout the installation process to ensure the tool is consistently achieving proper torque range. Once installed correctly, these clamps require no maintenance or re-inspection for the life of the roof.

For critical attachment applications utilizing an M8-1.25 x 16 mm Hex Flange Bolt, tighten the included M8 bolt to 160 inch pounds (13 foot pounds).

These instructions are for use by those experienced in the trade. Always follow appropriate safety precautions and use appropriate tools.



### Seam Profiles

**S-5-K Grip™ is designed to fit Klip-Rib® and other concealed fix ribbed profiles.**

**Seam profiles for the S-5-GX 10 insert with the standard clamp**

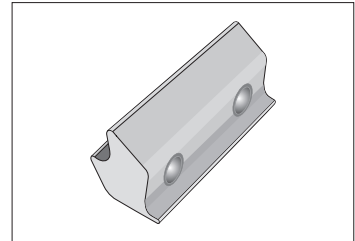
**(or S-5-GXM 10 mini insert with the mini clamp):**

- LYSAGHT KLIP-LOK® 406
- McElroy Metal Mirage
- AEP Span Klip-Rib®
- Metal Sales Clip-Loc
- SpeedDeck® SpeedDeck®
- Safintra Saflok 410
- Safintra Saflok 700
- Domico Domitec®
- And other similar profiles

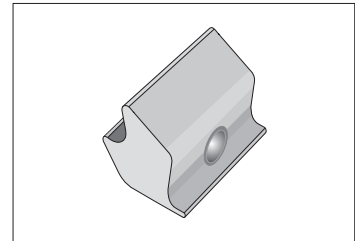
**Seam profiles for the S-5-GX 50 insert with the standard clamp (or S-5-GXM 50 mini insert with the mini clamp):**

- LYSAGHT KLIP-LOK Classic® 700
- LYSAGHT KLIP-LOK 700 Hi-Strength®
- Stramit Speed Deck Ultra®
- Fielders KingKlip® 700
- And other similar profiles

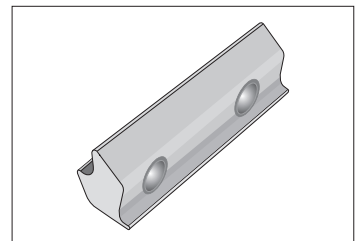
If you have a profile not listed here, please contact S-5!® to request a sample for testing.



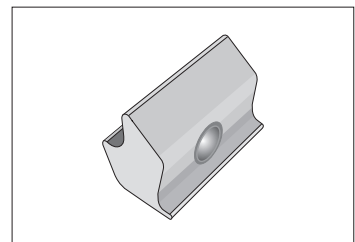
**S-5-GX 10 Insert**



**S-5-GXM 10 Mini Insert**



**S-5-GX 50 Insert**



**S-5-GXM 50 Mini Insert**

**S-5!® Warning! Please use this product responsibly!**

Products are protected by multiple U.S. and foreign patents. For published data regarding holding strength, fastener torque, patents, and trademarks, visit the S-5! website at [www.S-5.com](http://www.S-5.com).  
Copyright 2014, Metal Roof Innovations, Ltd. S-5! products are patent protected.  
S-5! aggressively protects its patents, trademarks, and copyrights. Version 102414.