



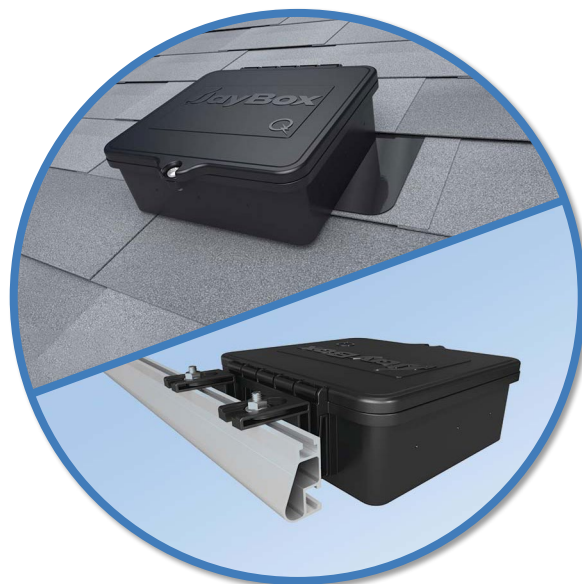
## QuickMount® JayBox™

### Keep Solar Wires Nested & Protected

JayBox™ is an ever-adaptable junction box, designed to securely enclose wires on nearly any solar project—with ample space to shelter up to 4 module strings.

The box is UL-listed, NEMA-3R-rated, and supports up to 1500-volt systems. It is made of a NORYL™ resin, known for its long-lasting UV-resistance and impact strength.

JayBox™ is available in two options: Roof Mount and Rail Mount. When installed on the roof deck, its low profile allows it to safely fit under the wings of the module array.



### Two Mounting Types: Roof & Rail

The roof-mounted JayBox™ comes with two deck screws and a simple flashing that only goes under one shingle course—without the need to cut shingles or remove nails. The rail-mounted JayBox™ comes with two interlocking hangers that attach to the rail using our Microinverter Bonding Hardware.

This component is part of the QuickMount® product line.



### Multiple Configuration Options

Threaded standoffs give you the freedom to mount electrical components—including DIN rail, grounding bars, and terminal blocks—in any orientation. Easy-to-drill guides also come on three sides of the box for running conduit into the enclosure.

### Durable NORYL™ Resin

JayBox™ is fabricated from SABIC's NORYL™ resin, giving it greater strength and resistance to UV radiation. It is well known for its lasting stability and performance in extreme environments.

SABIC and brands marked with ™ are trademarks of SABIC or its subsidiaries or affiliates.



**10-Year Warranty**  
Product guaranteed free of impairing defects.



## Abundant Feature Set

### Trustworthy Flashing & Waterproofing

The JayBox™ Roof Mount utilizes QuickMount's Elevated Water Seal Technology®, coming with a raised flashing that integrates with an EPDM sealing gasket on the underside of the box to fully protect roof penetrations. This waterproof assembly has passed the TAS-100 wind-driven rain test.

The flashing only installs in one direction, with an “upslope” marking to ensure proper placement. Simply align the box with the flashing and secure it to the roof with the supplied deck screws. No need to cut shingles or remove nails.

### Hassle-Free Lid & Captive Hardware

JayBox™ has a detachable, hinged lid to reduce interference and deliver maximum ease—staying open and out of the way even on up to 70° roof slopes.

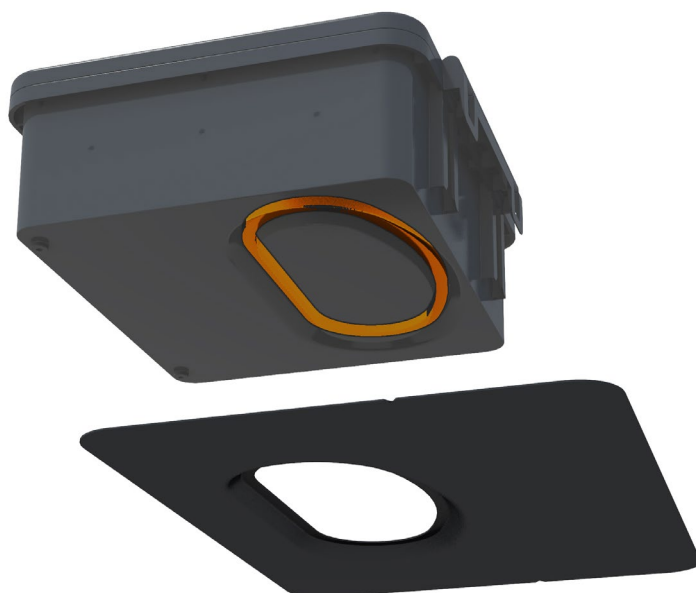
Once the lid is closed, the single, pre-installed, captive screw and nut keeps it snug and secure. Because this hardware is embedded into the lid, there is no need to worry about it getting lost on the roof.

### Drilling Guides & Draining Weep Holes

The enclosure includes easy-to-drill guide marks on three sides of the box. In addition, it has guides on the interior when drilling through the bottom for attic conduit runs. Weep holes also prevent any condensation from accumulating inside the box.

## Certification & Performance

Technical Specifications	
Maximum System Voltage	1500V
Max Current (Isc)	100A
Max Current per Circuit (String)	30A
Max Number of Input Circuits	4
Ambient Operating Conditions	-40°C to 75°C
Enclosure Rating (NEMA)	Type 3R - Rainproof
Allowable Wire Inputs	12 - 10 AWG
Allowable Wire Outputs	12 - 8 AWG
Equipment Grounding Conductor	10 - 6 AWG



### Water Seal Ratings

Passed the UL 441 Section 27 “Rain Test” and TAS 100-95 “Wind-Driven Rain Test”.



### UL Electrical Rating

Tested and evaluated to conform to UL 1741 by Intertek Group plc.



### Durable NORYL™ Resin

Made of a high-strength Noryl resin, with stability that surpasses polycarbonate.

