



Prism Solar

TECHNOLOGIES

The Clear Choice

120 CELL SERIES

440W-450W



Class Leading Output:
440W Bifacial top tier power performance



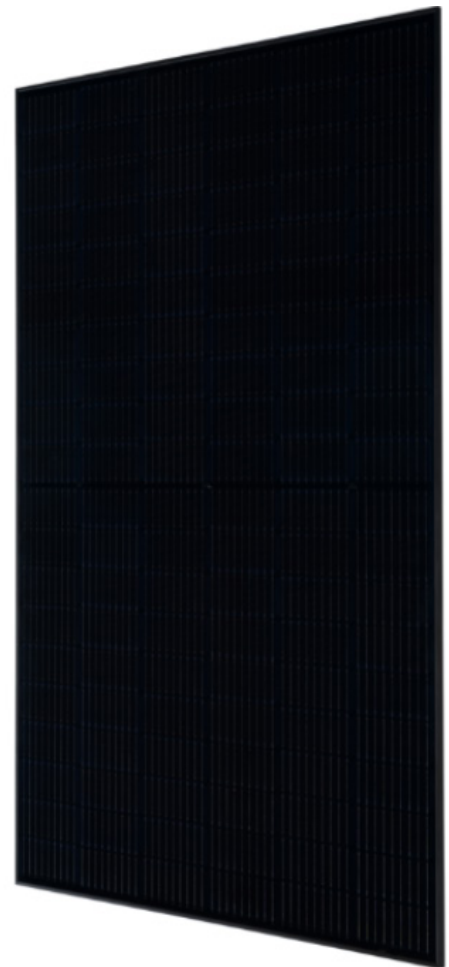
Advanced Technology:
Module efficiencies above 21%
M10 Multi-wire busbar cells



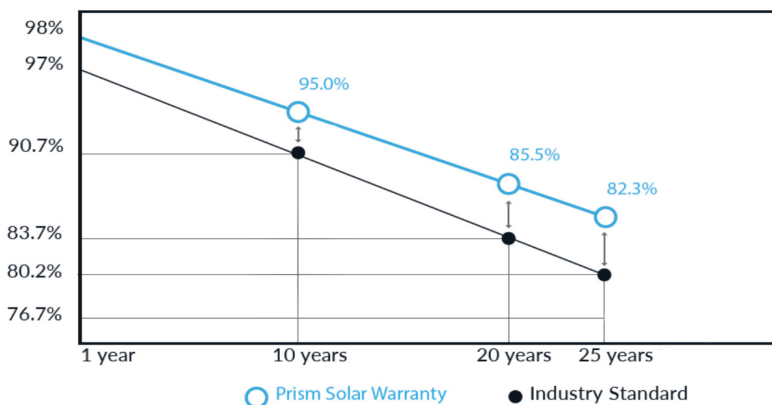
Reduced System Costs:
1500V robust framed design drives lower installation costs



Certified Reliability:
Tested above and beyond IEC Standards



Linear Performance Warranty



Proudly Engineering, Designed and Tested in the USA.



IEC 61215/ IEC 61730/ IEC 6170



120 CELL SERIES

440-450W

Electrical Data PST-xxxW-M60H-M10		440W, 445W, 450W	
Parameters		STC ¹	NOCT
Rated Power	P _{max} (W)	440/445/450	327/331/335
Rated Voltage	V _{mp} (V)	34.5/34.80/35.00	32.4/32.6/32.8
Rated Current	I _{mp} (A)	12.74/12.80/12.86	10.11/10.15/10.20
Open Circuit Voltage	V _{oc} (V)	41.20/41.40/41.60	38.6/38.80/39.00
Short Circuit Current	I _{sc} (A)	13.54/13.60/13.66	10.94/10.99/11.04
Module Efficiency	(%)	20.31/20.55/20.78	
Max System Voltage	UL/IEC	1500V	
Series Fuse Rating/Limiting Reverse Current		25A	
Power Tolerance		-0/+5W	
Electrical Parameter Tolerance		-3%/+3%	
Power Temperature Coefficient		-0.37 %/°C	
Voltage Temperature Coefficient (V _{oc})		-0.29 %/°C	
Current Temperature Coefficient (I _{sc})		+0.05 %/°C	
NOCT (C°)		45°C +/- 2°C	

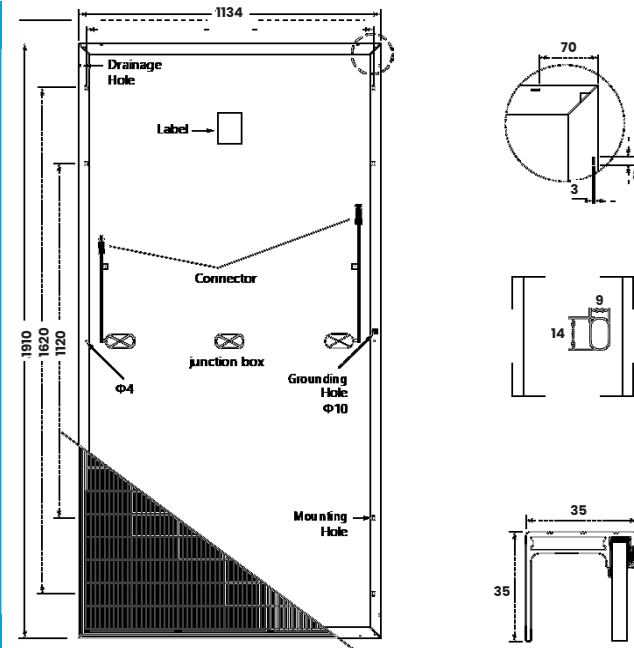
Mechanical Data	
Front Glass	3.2mm Tempered Low Iron, Anti-reflective coating
Frame Type	Anodized Aluminum Alloy
Bypass Diodes	3
Junction Box	IP68 with bypass-diodes
Cable (Type/Gauge/Length)	PV Wire 12 AWG 4mm ² 1200mm
Connectors	MC4 compatible - Staubli EVO2
Exterior Glass Dimensions	1910mm X 1134mm X 35mm (75.20in X 44.65in X 1.38in)
Weight	24kg (53 lbs.)

Operating Conditions	
Temperature	-40°C to 85°C (-40°F to 185°F)
Max Mechanical Load ³	2400 Pa wind load 5400 Pa snow load
Hail Safety Impact Velocity	

Certifications & Warranty	
Certifications and Listings	IEC61215/61730, CEC, Salt Mist
Fire Rating	Type=1 ; Class C
Limited Warranty (Workmanship/Power)	25 Years/25 Years Output ⁴

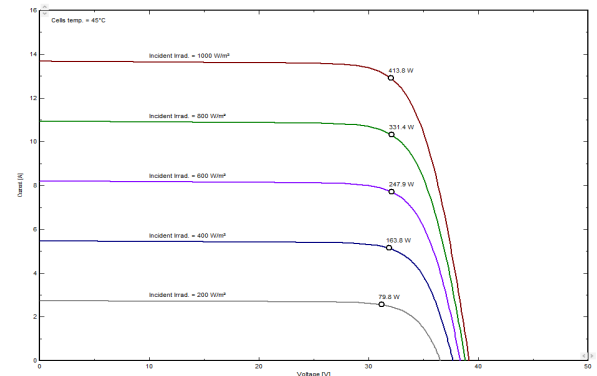
- 1 - Measured at Standard Testing Conditions (STC): cell temp 25°C, AM1.5, 1000W/m².
- 2 - Length and width dimensions are +/- 5mm.
- 3 - To achieve this max weight loading, the support and racking system must meet the mechanical weight loading specified.
- 4 - Please see the Prism Solar Warranty for complete details.

CAUTION: Read the Installation Manual carefully before using this product. All specifications are subject to change without notice.



Dimensions, mm [in]

Length & width dimensions and j-box location are +/- 5mm.



Temperature Dependence PST-440W-M60H

Prism Solar
TECHNOLOGIES