



Uniquely shaped for flat roofs.

IronRidge BX delivers superior power density and design flexibility to flat roof solar arrays. Made of a glass-reinforced composite, the BX Chassis is engineered for extreme structural loading, yet is also shaped to be roof-friendly and easy to install.

Certified BX plan sets can be obtained instantly through an online Design Assistant or by contacting IronRidge Commercial Services.



Glass-Reinforced Composite

Corrosion-free and engineered for long-term structural performance.



Commercial Services

Engineering support to optimize system design.



Class A Fire Rating

Certified to maintain the fire resistance rating of the existing roof.



Design Assistant

Online software makes it simple to create, share, and price projects.



UL 2703 Listed System

Entire system and components meet newest effective UL 2703 standard.



25-Year Warranty

Products guaranteed to be free of impairing defects.

Chassis

5° Chassis



Ballasted mounting for 5 degree tilt angle.

- Max load spreading design
- Fully encloses ballast
- 360 degree drainage

10° Chassis



Ballasted mounting for 10 degree tilt angle.

- Max load spreading design
- Fully encloses ballast
- 360 degree drainage

Top Clamp



Combines with Bottom Clamp for top-bottom module grip.

- Secures above module
- One-tool attachment
- Mill aluminum 6000 series

Bottom Clamp



Combines with Top Clamp to up structural connection.

- Secures below module
- One-tool attachment
- Mill aluminum 6000 series

Grounding

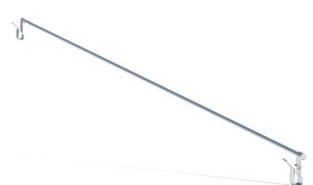
8" Mod Bonding Jumper



Bond adjacent modules in the array.

- Press-on installation
- Tin-plate copper wire
- Factory crimped connection

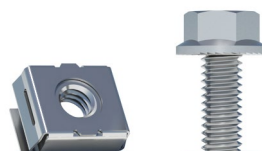
38" Row Bonding Jumper



Complete row-to-row bonding in the array.

- Press-on installation
- Tin-plate copper wire
- Factory crimped connection

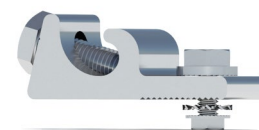
MLPE Mounting Hardware



Optional mounting hardware for MLPE devices.

- Cap screw and cage nut
- 5/16" socket install
- Stainless steel 300 series

PV Mod Grounding Lug



Connect arrays to equipment ground.

- Low profile
- Mounts to module frame
- One per continuous array

Accessories

Cable Tie



Complete wire management with weatherproof ties.

- UV stabilized polyamide
- 12" length, bundle of 100
- Black finish

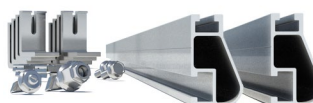
Edge Clip Cable Tie



Manage wires underneath module and Chassis flange.

- Clips to module & Chassis
- UV stabilized polyamide
- Black finish

String Inverter Mount Kit



Create mounting platform for inverters.

- Chassis, XR10 rail, hwd
- Up to 4' inverter base
- Raises inverter off deck

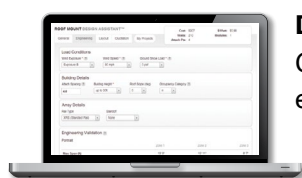
Flat Roof Attachment Kit



Add anchors to ballasted system.

- Includes hardware
- For ballast-attached hybrid
- Uses locally-sourced strut

Resources



Design Assistant

Go from rough layout to fully engineered system in minutes.



Chassis Display #7 Recycle Label

Like most glass-filled nylons, it is 100% recyclable—usually living on in furniture.

Find more info at epa.gov/recycle