

DCM0100

Technical Specifications

Nominal Voltage	12V
Nominal Capacity	110Ah (20 Hr Rate to 1.75V/cell)
Chemistry	Lead Acid -AGM

Physical Specifications

Length	330mm	12.99in
Width	173mm	6.81in
Height	212mm	8.35in
Height w/Terminal	220mm	8.66in
Weight (+/- 5%)	30.6Kg	67.5bs
Terminal Type	INSERT TERMINALS	
Case Material	ABS	

Charging Specifications

Charge Voltage	Battery	Per Cell
Float	13.5V~13.8V	2.25V~2.30V
Cycle	14.4V~15.0V	2.40V~2.47V
Max. Charge Current	27A	

Capacity Specifications

5 Second Discharge Current	1200A	
Self Discharge (to 80% capacity)	3 Months	91%
	6 Months	82%
	12 Months	64%
Internal Resistance	4.9mΩ(25°C)	

Temperature Specifications

Operating Temperature Capability **-40° F (-40° C) to 140° F (60° C)**

Recommended parameters for optimal battery life and performance:

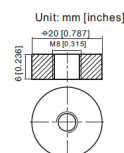
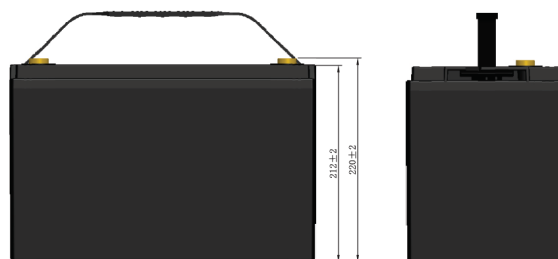
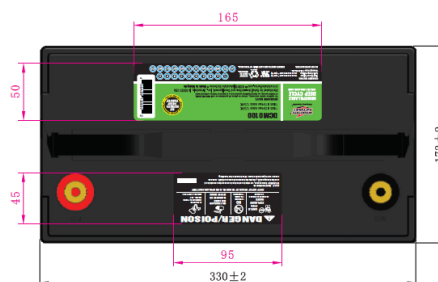
Charging: 32° F to 104° F (0° C to 50° C), Discharging: 5° F to 122° F (-15° to 50° C),

Storage: 50° to 77° F (10° C to 25° C)

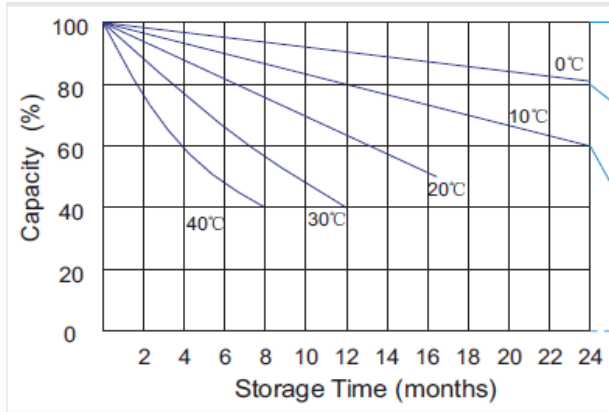


FEATURES:

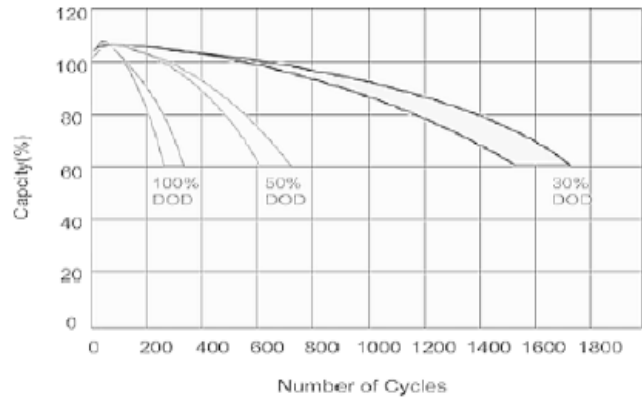
- Long life for deep discharge uses
- Ideal for applications using major capacity prior to recharging
- Depth of discharge should be between 50% & 80% and recharged as soon as possible
- Flexibility of mounting orientation
- VRLA technology to eliminate spills and over-pressurization
- Maintenance-free



Storage Characteristics



Cycle Life of Deep Cycle



Constant Current Discharge Characteristics: A (25°C)

F.V/Time	5 min	30 min	1 hr	3 hr	5 hr	10 hr	20 hr
1.85V/cell	146.40	77.50	49.90	24.20	15.90	9.40	5.31
1.80V/cell	187.10	91.40	55.90	26.00	17.70	10.00	5.36
1.75V/cell	205.60	94.90	58.50	26.50	17.50	10.20	5.41
1.70V/cell	224.10	98.80	60.40	27.20	18.00	10.20	5.51
1.67V/cell	241.80	104.20	62.40	28.40	18.50	10.40	5.58
1.60V/cell	262.50	110.00	64.60	29.30	19.10	10.50	5.61

Constant Power Discharge Characteristics: W (25°C)

F.V/Time	5 min	30 min	1 hr	3 hr	5 hr	10 hr	20 hr
1.85V/cell	273.20	148.80	96.90	47.20	31.30	18.70	10.60
1.80V/cell	344.40	173.50	107.90	50.60	33.50	19.80	10.70
1.75V/cell	373.80	179.30	112.50	51.40	34.30	20.00	10.80
1.70V/cell	401.70	185.80	115.70	52.70	35.10	20.20	11.00
1.67V/cell	430.40	195.20	119.20	54.80	36.00	20.60	11.10
1.60V/cell	459.40	201.00	122.50	56.20	37.00	20.80	11.20

