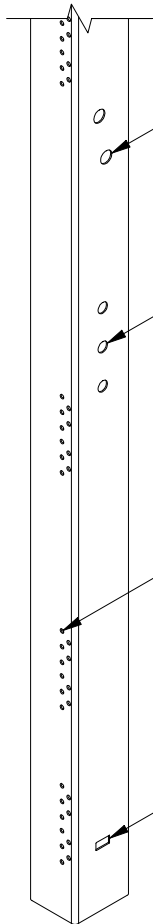
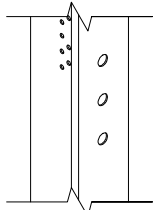
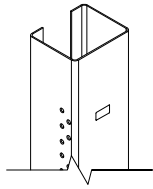


PART # TABLE			
P/N	DESCRIPTION	LENGTH	GAUGE
404036	TOP CHORD CHANNEL	11'-6 5/8"	14 GAUGE

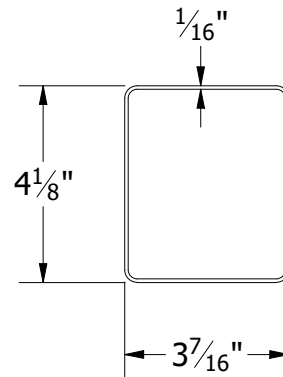


C-PILE ATTACHMENT POINT
(2 BOLT HOLE PATTERN)

DIAGONAL BRACE ATTACHMENT POINT
(2X - 3 BOLT HOLE PATTERN)

EAST - WEST BEAM ATTACHMENT
HOLE PACKS

MANUFACTURING SLOT
(NOT USED)



PRODUCT LINE:	GFT
DRAWING TYPE:	PART DETAIL
DESCRIPTION:	TOP CHORD CHANNEL
REVISION DATE:	10/23/2019

DRAWING NOT TO SCALE
ALL DIMENSIONS ARE
NOMINAL

PRODUCT PROTECTED BY
ONE OR MORE US PATENTS
LEGAL NOTICE

GFT-P03

SHEET