

# Conext™ Battery Fuse Combiner Box

Combine, connect and disconnect Conext™ inverter/chargers with one battery bank



## Product at a glance

The Conext™ Battery Fuse Combiner Box 250 combines up to three Conext™ XW+ inverter/chargers with one battery bank using a single battery pole disconnect method and provides fuse protection for cables, batteries and inverter/chargers. Two Battery Fuse Disconnect Box 250s can be configured side-by-side to accommodate dual battery pole disconnection requirements. A smaller, more compact Battery Fuse Combiner Box 160 is available battery side application with Conext™ MPPT Solar Charge Controllers.

## Why choose Automatic Generator Start?

### Higher return on investment

- One low cost device to combine up to three Conext inverter chargers with one battery bank
- Standardized repeatable and cost effective installation method

### Flexible

- Single or dual pole battery disconnection for Conext™ XW and SW inverter chargers
- Single or dual pole battery disconnection for Conext™ MPPT Solar Charge Controllers

### Easy to service

- Clear plastic window allows visual no-touch inspection of fuses
- Access holes for volt meter probes allows for testing without interrupting system
- Lockout accepts lead seal to guard against unauthorized access

### Easy to install

- Wall-mount or flush-mount
- Lug nut cable connections

## Product applications



Backup power



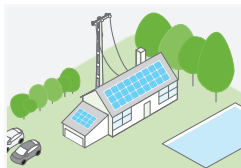
Residential grid-tie solar with backup power



Off-grid solar



Community electrification



Self-consumption

Device short name	Conext™ Battery Fuse Combiner Box 160	Conext™ Battery Fuse Combiner Box 250
Electrical specifications		
Nominal voltage	24 / 48 V DC	24 / 48 V DC
Nominal current	160 A	250 A
Fuse specifications		
Type	DIN	DIN
Size	NH00, NH000	NH1
Number	3	3
Cable connections		
Quantity per pole	3	3
Maximum Cable Size	70 mm² (2/0)	107 mm² (4/0)
Terminal Type	M8	M10
General specifications		
Part number	865-1030-01	865-1031-01
Product dimensions (H x W x D)	16.3 x 10.7 x 8.0 cm (6.4 x 4.2 x 3.1 in)	24.6 x 18.6 x 11.0 cm (9.7 x 7.3 x 4.3 in)
Shipping dimensions (H x W x D)	29.2 x 15.8 x 14.5 cm (11.5 x 6.2 x 4.5 in)	34.3 x 24.6 x 26.4 cm (13.5 x 9.7 x 10.4 in)
Product weight	1.4 kg (3.1 lb)	3.6 kg (7.9 lb)
Shipping Weight	1.8 kg (4.0 lb)	4.2 kg (9.2 lb)
Mounting options	Wall-mount, flush-mount	Wall-mount, flush-mount
Operating temperature range °C	-20... 70	-20... 70
Warranty	Please refer to our website, SEsolar.com for the latest version of the warranty statement.	
Regulatory approvals		
Markings	CE	
Standards	EN/IEC 60947-1, EN/IEC 60947-3, IEC 60269-2-1	
IP degree of protection	IP20 conforming to IEC 60529	
Included parts		
	Fuse box	
	Mounting hardware	
	Top terminal shield	
	Fuses (3)	
	Combiner bar	
Compatible products part numbers		
Conext XW+ IEC (230 V)	XW+ 8548 E: 865-8548-61	
Conext XW+ UL (120/240 V)	XW+ 6848 NA: 865-6848-01	
Conext SW IEC (230 V)	SW 4024: 865-4024-55 / SW 4048: 865-4048-55	
Conext SW UL (120 V)	SW 4024: 865-4024-21 / SW 4048: 865-4048-21	
Conext MPPT 80 600	865-1032	
Conext MPPT 60 150	865-1030-01	

Specifications are subject to change without notice.

Life Is On

**Schneider**  
Electric