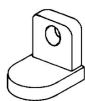


# 8GU1H

## SPECIFICATIONS

|                              |                               |
|------------------------------|-------------------------------|
| Nominal Voltage (V)          | 12V                           |
| Capacity at C/100            | 36 Ah                         |
| Capacity at C/20             | 31.6 Ah                       |
| Capacity at C/5              | 26.8 Ah                       |
| Weight                       | 23.5 lbs. (11 kg)             |
| Plate Alloy                  | Lead Calcium                  |
| Posts                        | Forged Terminals & Bushings   |
| Container/Cover              | Polypropylene                 |
| Operating Temperature Range  | -76°F (-60°C) - 140°F (60°C)  |
| Charge Voltage @ 77°F (25°C) |                               |
| Cycle                        | 13.8 - 14.6 volts             |
| Float                        | 13.4 - 13.6 volts             |
| Vent                         | Self-sealing                  |
| Electrolyte                  | Sulfuric acid thixotropic gel |
| Terminal                     | Y (T873)                      |



Rated non-spillable by ICAO, IATA and DOT

Made in the U.S.A. by East Penn Manufacturing Co, Inc.

Distributed by:

## Valve-Regulated, Gelled-Electrolyte Battery



## DIMENSIONS

*Inches (mm)*

Length (mm) 8.41 (214 mm)

Width (mm) 5.18 (132 mm)

Height (mm) 7.22 (183 mm)  
*Including terminal*

**Gel Cycle Life vs Depth of Discharge at +25°C (77°F)**  
Based on BCI 2-hour Capacity

