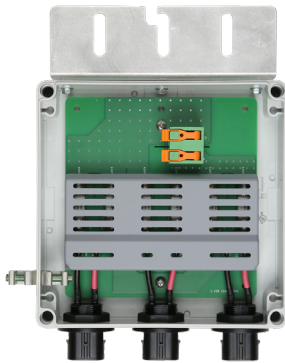


Enphase Q Aggregator and Q Cable Accessories

The **Enphase Q Aggregator™** and **Enphase Q Cable™** are part of the sixth generation Enphase IQ System™. These accessories provide simplicity, reliability, and faster installation times.



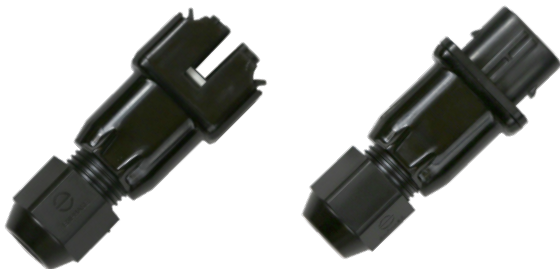
Enphase Q Aggregator

- Reduces electrical labor and eliminates wire nuts for safer, faster installations
- Aggregates up to three fully populated 20A branch circuits
- Supports systems up to 11.5 kW with only two line conductors and a ground coming from the roof with a single rooftop aggregator



Enphase Q Cable

- Two-wire, double-insulated Enphase Q Cable is 50% lighter than the previous generation Enphase cable
- New cable numbering and plug and play connectors speed up installation and simplify wire management
- Link connectors eliminate cable waste



Field-Wireable Connectors

- Easily connect Q cables on the roof without complex wiring
- Make connections from any open connector and center feed any section of cable within branch limits
- Available in male and female connector types

Enphase Q Cable Accessories

Q AGGREGATOR SPECIFICATIONS

Q Aggregator	Q-BA-3-1P-60 (single-phase). Combines up to three microinverter branches into one home run. Protect with maximum 60 A, 2-pole OCPD.
Q Commercial Aggregator	Q-BA-3-3P-35 (three-phase). Combines up to three, single-phase microinverter branches into a three-phase home run. Protect with maximum 40 A, 3-pole OCPD.
Dimensions	190 mm (W) x 227 mm (D) x 80 mm (H) [7.5 in (W) x 9 in (D) x 3.2 in (H)]
Homerun conductor size range	#12 to #4 AWG
Enclosure rating	NEMA3 (up to 45° from horizontal)
Temperature range	-40° C to +55° C (-40° F to +122° F)
Compliance	UL1741 (assembled product) and UL6703 (bulkhead connectors)

CONDUCTOR SPECIFICATIONS





Certification	UL3003 (raw cable), UL 9703 (cable assemblies), DG cable
Flame test rating	FT4
Compliance	RoHS, OIL RES I, CE, UV resistant, combined UL for the United States
Conductor type	THHN/THWN-2 dry/wet
Disconnecting means	The AC and DC bulkhead connectors have been evaluated and approved by UL for use as the load-break disconnect required by NEC 690.

Q CABLE TYPES / ORDERING OPTIONS

Model Number	Max Nominal Voltage	Connector Spacing	PV Module Orientation	Connector Count per Box
Q-12-10-240	277 VAC	1.3 m (4.2 ft)	Portrait	240
Q-12-17-240	277 VAC	2.0 m (6.5 ft)	Landscape (60-cell)	240
Q-12-20-200	277 VAC	2.3 m (7.5 ft)	Landscape (72-cell)	200

ENPHASE Q CABLE ACCESSORIES

Name	Model Number	Description
Raw Q Cable	Q-12-RAW-200	300 meters of 12 AWG cable with no connectors
Field-wireable connector (male)	Q-CONN-10M	Make connections from any Q Aggregator open connector
Field-wireable connector (female)	Q-CONN-10F	Make connections from any Q Cable open connector
Cable Clip	Q-CLIP-100	Used to fasten cabling to the racking or to secure looped cabling
Disconnect tool	Q-DISC-10	Disconnect tool for Q Cable connectors, DC connectors, and AC module mount
Q Aggregator sealing caps (male)	Q-BA-CAP-10	Sealing cap for unused aggregator connections
Q Cable sealing caps (female)	Q-SEAL-10	One needed to cover each unused connector on the cabling
Terminator	Q-TERM-10	Terminator cap for unused cable ends
Replacement DC Adaptor (MC4)	Q-DCC-2	DC adaptor to MC4 (max voltage 100 VDC)
Replacement DC Adaptor (UTX)	Q-DCC-5	DC adaptor to UTX (max voltage 100 VDC)

 <p>TERMINATOR Terminator cap for unused cable ends, sold in packs of ten (Q-TERM-10)</p>	 <p>SEALING CAPS Sealing caps for unused aggregator and cable connections (Q-BA-CAP-10 and Q-SEAL-10)</p>
 <p>DISCONNECT TOOL Plan to use at least one per installation, sold in packs of ten (Q-DISC-10)</p>	 <p>CABLE CLIP Used to fasten cabling to the racking or to secure looped cabling, sold in packs of ten (Q-CLIP-100)</p>