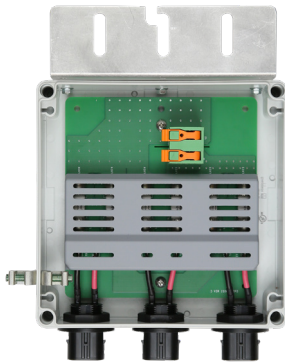


Enphase Q Aggregator and Q Cable Accessories

The **Enphase Q Aggregator™** and **Enphase Q Cable™** are part of the sixth generation Enphase IQ System™. These accessories provide simplicity, reliability, and faster installation times.



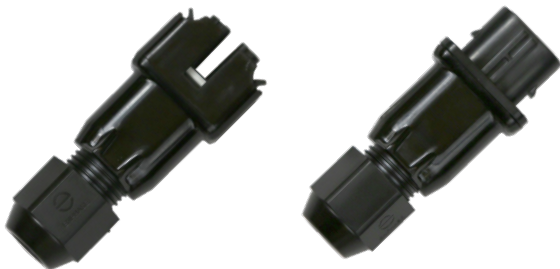
Enphase Q Aggregator

- Reduces electrical labor and eliminates wire nuts for safer, faster installations
- Aggregates up to three fully populated 20A branch circuits
- Supports systems up to 11.5 kW with only two line conductors and a ground coming from the roof with a single rooftop aggregator



Enphase Q Cable

- Two-wire, double-insulated Enphase Q Cable is 50% lighter than the previous generation Enphase cable
- New cable numbering and plug and play connectors speed up installation and simplify wire management
- Link connectors eliminate cable waste



Field-Wireable Connectors

- Easily connect Q cables on the roof without complex wiring
- Make connections from any open connector and center feed any section of cable within branch limits
- Available in male and female connector types

Enphase Q Cable Accessories

Q AGGREGATOR SPECIFICATIONS

| | |
|------------------------------|--|
| Q Aggregator | Q-BA-3-1P-60 (single-phase). Combines up to three microinverter branches into one home run. Protect with maximum 60 A, 2-pole OCPD. |
| Q Commercial Aggregator | Q-BA-3-3P-35 (three-phase). Combines up to three, single-phase microinverter branches into a three-phase home run. Protect with maximum 40 A, 3-pole OCPD. |
| Dimensions | 190 mm (W) x 227 mm (D) x 80 mm (H) [7.5 in (W) x 9 in (D) x 3.2 in (H)] |
| Homerun conductor size range | #12 to #4 AWG |
| Enclosure rating | NEMA3 (up to 45° from horizontal) |
| Temperature range | -40° C to +55° C (-40° F to +122° F) |
| Compliance | UL1741 (assembled product) and UL6703 (bulkhead connectors) |

CONDUCTOR SPECIFICATIONS





| | |
|---------------------|--|
| Certification | UL3003 (raw cable), UL 9703 (cable assemblies), DG cable |
| Flame test rating | FT4 |
| Compliance | RoHS, OIL RES I, CE, UV resistant, combined UL for the United States |
| Conductor type | THHN/THWN-2 dry/wet |
| Disconnecting means | The AC and DC bulkhead connectors have been evaluated and approved by UL for use as the load-break disconnect required by NEC 690. |

Q CABLE TYPES / ORDERING OPTIONS

| Model Number | Max Nominal Voltage | Connector Spacing | PV Module Orientation | Connector Count per Box |
|--------------|---------------------|-------------------|-----------------------|-------------------------|
| Q-12-10-240 | 277 VAC | 1.3 m (4.2 ft) | Portrait | 240 |
| Q-12-17-240 | 277 VAC | 2.0 m (6.5 ft) | Landscape (60-cell) | 240 |
| Q-12-20-200 | 277 VAC | 2.3 m (7.5 ft) | Landscape (72-cell) | 200 |

ENPHASE Q CABLE ACCESSORIES

| Name | Model Number | Description |
|-----------------------------------|--------------|--|
| Raw Q Cable | Q-12-RAW-200 | 300 meters of 12 AWG cable with no connectors |
| Field-wireable connector (male) | Q-CONN-10M | Make connections from any Q Aggregator open connector |
| Field-wireable connector (female) | Q-CONN-10F | Make connections from any Q Cable open connector |
| Cable Clip | Q-CLIP-100 | Used to fasten cabling to the racking or to secure looped cabling |
| Disconnect tool | Q-DISC-10 | Disconnect tool for Q Cable connectors, DC connectors, and AC module mount |
| Q Aggregator sealing caps (male) | Q-BA-CAP-10 | Sealing cap for unused aggregator connections |
| Q Cable sealing caps (female) | Q-SEAL-10 | One needed to cover each unused connector on the cabling |
| Terminator | Q-TERM-10 | Terminator cap for unused cable ends |
| Replacement DC Adaptor (MC4) | Q-DCC-2 | DC adaptor to MC4 (max voltage 100 VDC) |
| Replacement DC Adaptor (UTX) | Q-DCC-5 | DC adaptor to UTX (max voltage 100 VDC) |

| | |
|---|--|
|  <p>TERMINATOR Terminator cap for unused cable ends, sold in packs of ten (Q-TERM-10)</p> |  <p>SEALING CAPS Sealing caps for unused aggregator and cable connections (Q-BA-CAP-10 and Q-SEAL-10)</p> |
|  <p>DISCONNECT TOOL Plan to use at least one per installation, sold in packs of ten (Q-DISC-10)</p> |  <p>CABLE CLIP Used to fasten cabling to the racking or to secure looped cabling, sold in packs of ten (Q-CLIP-100)</p> |