

# RSD-EYE+ Operation Manual

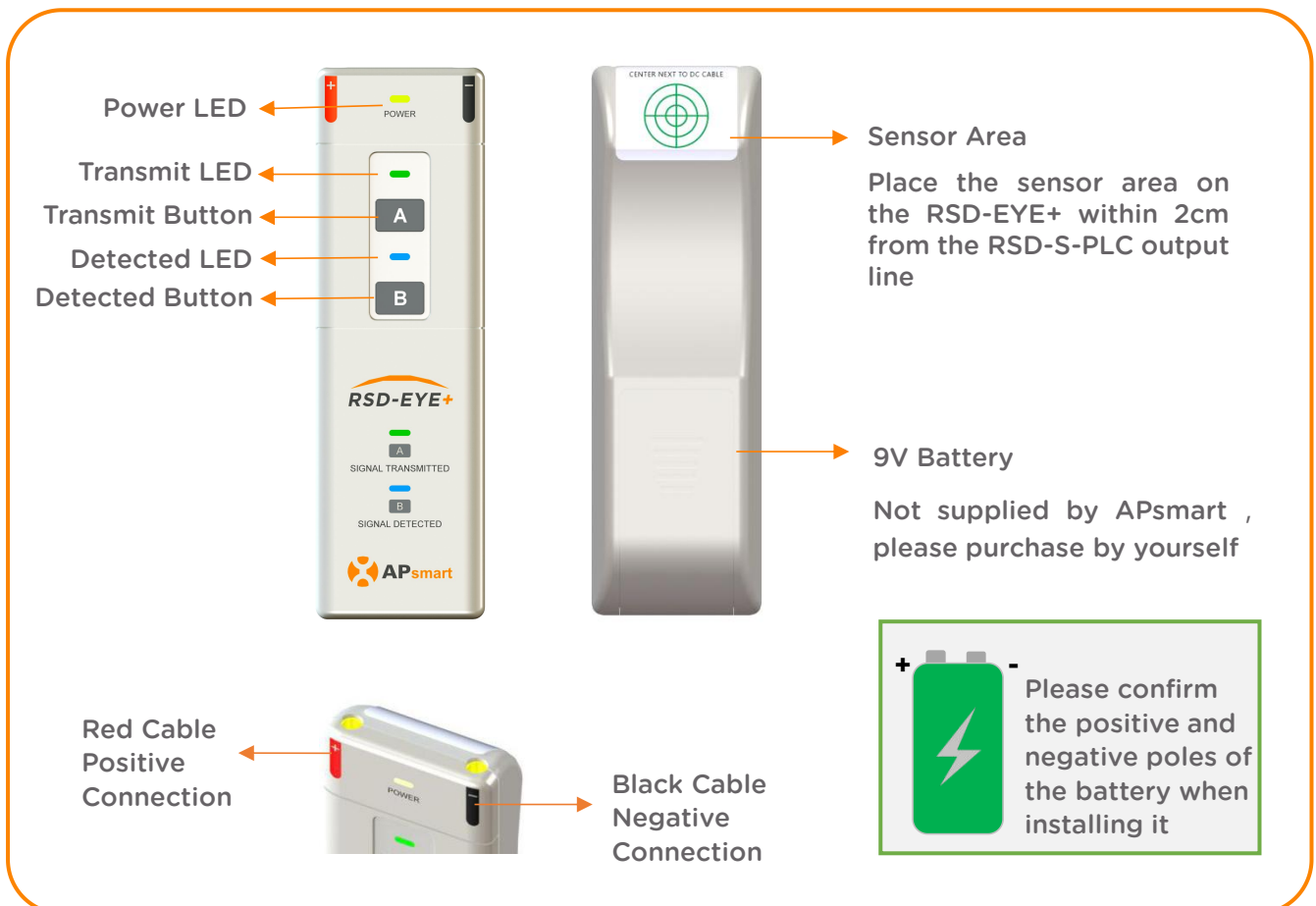
## ◆ Introduction



## Signal Smart Detector RSD-EYE+

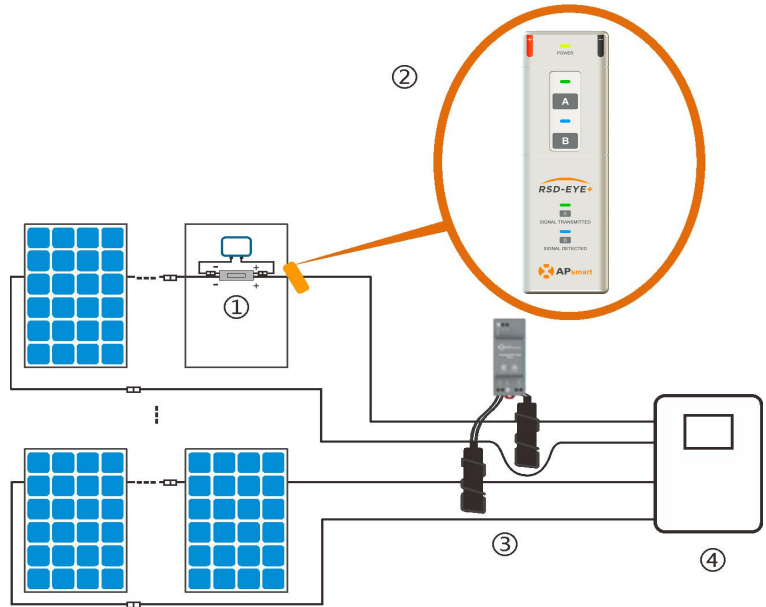
RSD-EYE+ is a small and lightweight multifunctional handheld detection device for sensing pulse modulation from the power line communication (PLC) signal between transmitter and RSD-S-PLC, to ensure compliance to the SunSpec Alliance Rapid Shutdown protocol. In addition, the RSD-EYE+ can also be used as a handheld transmit device, by connecting an optional external DC cable to send an in-line keep-alive signal to RSD-S-PLC.

## ◆ Product Structure



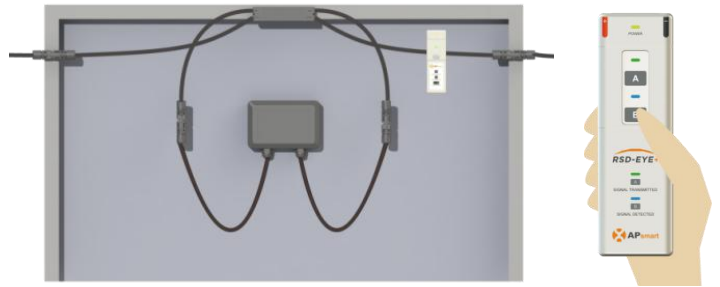
## ◆ System Diagram

- ① RSD-S-PLC
- ② RSD-EYE+
- ③ Transmitter-PLC
- ④ Inverter



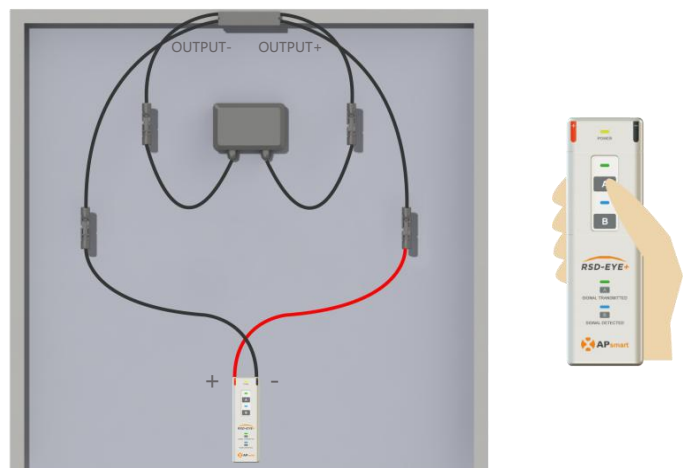
## ◆ RSD-EYE+ Detected Mode

After all RSD-S-PLC in the PV system have been installed and the transmitter is connected and powered on, place the sensing area on the RSD-EYE+ within 2cm from the RSD-S-PLC output powerline. Testing each RSD-S-PLC with the RSD-EYE+ to confirm the presence of a keep-alive signal. During the detection, the “Detected Mode” button B should be hold for more than 3 seconds, and the yellow power LED will be lit. When the keep-alive signal is detected, the detected mode LED will be lit blue and an audible alert will sound to confirm. This will hold about 7 seconds even if RSD-EYE+ leave the detecting area, so during a new test, wait for the indication disappears or press the key again.



## ◆ RSD-EYE+ Transmit Mode

Confirm the RSD-S-PLC input cables are connected to PV module output cables, and its output cables are connected to the external cable from RSD-EYE+ properly, and the RSD-S-PLC is on the off state. During the detection process, the transmission mode button A should be pressed above 2 seconds, then the yellow power LED lights on. If the output voltage detected greater than 20V, the corresponding transmitted mode LED light turns green and an audible alert will sound continually.



**Warning: Please only connect one RSD for testing.**