



Ameresco Solar supplies and distributes a complete line of enclosures to accommodate a wide range of off-grid applications. We have a large selection of enclosures and control cabinets ranging from single battery (for pole and ROHN towers) to custom skid-mounted, multi-battery enclosures. Our enclosure line has the flexibility to meet your solar system storage needs.

BBA-6 Series Features:

NEMA Ratings

- NEMA 3R (Standard), NEMA 4, NEMA 4X

Available Material and Finish

- Mill finished aluminum (Standard)
- Powder coated aluminum (White)
- Stainless steel (304 or 316)

Enclosure Dimensions

- Overall: (H) 40.125" x (W) 25.25" x (D) 17.125"
- Opening: (H) 31.625" x (W) 21.5"
- Inside: (H) 35.75" x (W) 23.75" x (D) 14.875"

Back Panel Dimensions

- (H) 17" x (W) 21.75"

Battery Capacity

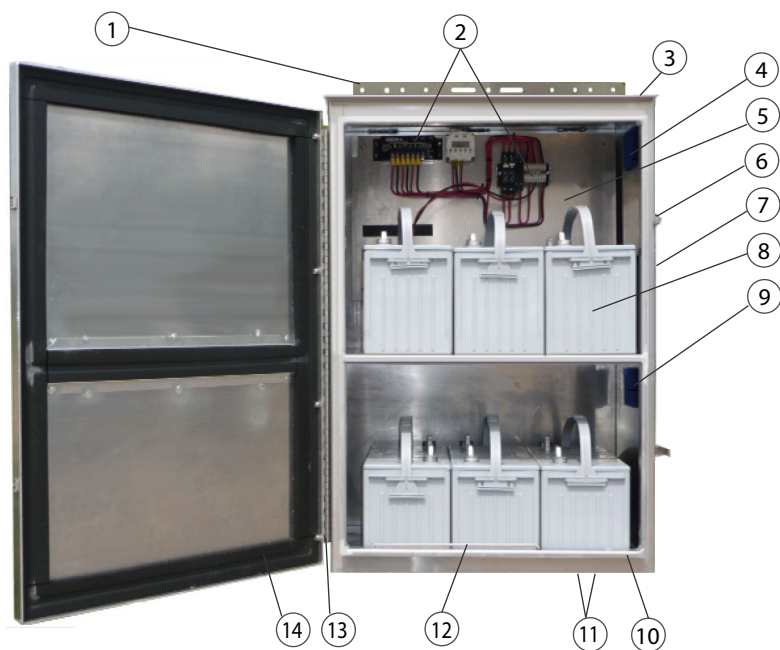
- (6) BCI Group 27
- (6) BCI Group 30
- (6) BCI Group 31
- (2) BCI Group 8G4D
- (2) BCI Group 8G8D

Weight

- 61 lbs



ENCLOSURES - BBA-6 Series



- ① Mounting Tab
- ② Electrical Assembly (Not included)
- ③ Rain Drip Lip
- ④ Fiberglass "Insect Proof" Screen on all Louvered Openings
- ⑤ Back Panel
- ⑥ Stainless Lockable Draw Latch
- ⑦ BBA-6 Cabinet
- ⑧ Battery (Not included)
- ⑨ Filter Media (Removable for cleaning)
- ⑩ Double Flanged Door Opening
- ⑪ (2) 1/2" NPT Knock-outs (CGB's/Conduit Fittings)
- ⑫ Door Stop
- ⑬ Stainless Steel Hinge
- ⑭ Closed Cell Neoprene Gasket

Mounting Structures



Mounts on wall using 4 lag bolts
(Bolts not included)

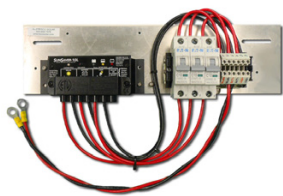


Mounts to ROHN25 tower using 4 u-bolts
(Bolts not included)



Mounts to 2-3" schedule 40 pole using 2 u-bolts
(Bolts not included)

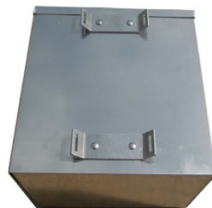
Mounting Options



Custom designed assembly sized to meet solar system requirements



Door fans available in 12V, 24V, and 48V DC/120V AC



Banding available for unique mounting structures

Additional Options:

- Breather/drain for NEMA4 - 4X (Required for all battery applications)
- Heat strips (120V, 150W with thermostat)
- Interior insulation (Low E)
- Sun shields (Available for top, sides, and door)
- Key lock (#1 or #2 Pelco)